



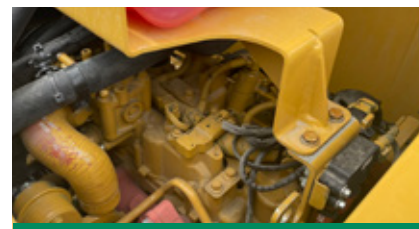
GRAVITY FEED HOPPER.

The gravity fed 6-ton (5.4 mt) hopper features a hydraulically raised floor and wings with two independently operated hydraulic cut-off doors for exceptional material management.



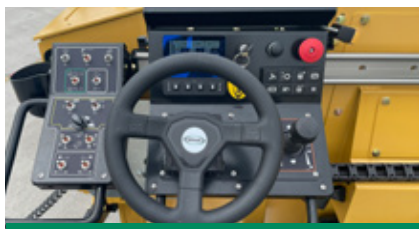
ELECTRIC SCREED HEAT.

The Weiler designed screed delivers outstanding mat quality and a standard paving range of 8' (2.4 m) to 13' (3.35 m). Four heating elements and optional heated end gates are powered by an hydraulically driven 12 kW generator.



POWERTRAIN.

A Cat® C2.2 Tier 4/ Stage V engine provides 60 hp (45 kW) and powers a 2-speed hydrostatic drive with 180 fpm (55 m/min) max paving speed and 300 fpm (91 m/min) max transport speed.



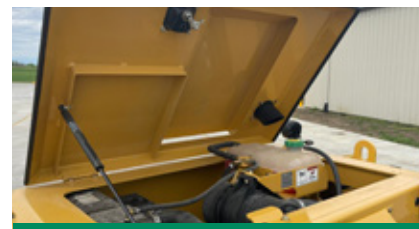
SIMPLE OPERATION.

Dual side operation with a sliding control panel with dual electrical joysticks or steering wheel control, tractor mounted augers with cutoff doors and color LCD display providing machine conditions and diagnostics. Screed mounted operator seat optional.



DURABLE UNDERCARRIAGE.

The undercarriage features 55" (1397 mm) track length with 39" (990 mm) of ground contact, 12" (305 mm) steel track pads, a sprocket driven 125 mm track chain pitch and automatic track tensioning. 12" (305 mm) molded poly track pad optional.



FAST SERVICE.

Remote grease lines, spray down system with 7 gal (26 L) tank and coiled hoses, large engine access door and Caterpillar dealer service and support keep your machine up and running with limited down time.

P75 SPECIFICATIONS

WEIGHT	12,600 lb	5715 kg	SCREED WEIGHT	2,100 lb	952 kg	ENGINE	Cat® C2.2 Tier 4F/ST V	
LENGTH	9' 9"	2.97 m	MAIN PLATE WIDTH	13"	330 mm	PAVING SPEED	180 fpm	55 mpm
WIDTH	98"	2.48 m	EXTENSION PLATE WIDTH	7"	178 mm	TRANSPORT SPEED	300 fpm	91 mpm
HEIGHT	70"	1.78 m	SCREED HEAT	Electric - 4 elements		FUEL CAPACITY	25 gal	94 L
TRUCK CLEARANCE	20.75"	557 mm	VIBRATION	1 x 2500 vpm		HYDRAULIC CAPACITY	22 gal	83 L
AUGER DIAMETER	9"	229 mm	MAX AUGER SPEED	125 rpm		SPRAY DOWN CAPACITY	7 gal	26 L

POWERTRAIN

- Cat® C2.2 Tier 4F/ST V engine provides 60 hp (45 kW)
- 2-speed hydrostatic drive, 300 fpm (91 m/min) transport speed
- Automatic track tensioning
- 55" (1397 mm) track length with 39" (990 mm) of ground contact
- 12" (305 mm) steel track pads, poly track pad option
- Sprocket driven 125 mm track chain pitch
- Hydraulically driven 12 kW generator

MATERIAL DELIVERY

- Gravity fed, hydraulically raised hopper floor and wings
- 6-ton (5.4 mt) hopper
- Tractor mounted 9" (228 mm) augers with cutoff doors

SIMPLE OPERATION

- Sliding control panel with dual electric joysticks for dual side operation
- Color LCD display provides conditions and diagnostics
- Pause mode enables return to same settings

SALES AND SERVICE

Sold and serviced through Caterpillar dealers worldwide.

SCREED

- 8' (2.4 m) to 13' (3.35 m) standard paving width
- 4 element electric heated screed
- Optional sonic feed sensors

SERVICE/MAINTENANCE

- 7 gal (26 L) spray down system with 2 hoses/nozzles
- Braided electrical harnesses and sealed connections
- 12-volt electric system with automotive-type fuses
- Remote hydraulic diagnostic ports
- Remote grease fittings
- Large engine access door

OPTIONAL EQUIPMENT

- 12" (305 mm) molded poly track pads
- Screed mounted operator's seat (includes 1 seat)
- Steering wheel controls
- Second steering indicator
- LED lighting group
- Heated end gates
- Sonic controlled augers
- 12V electric screed vibrator

WARRANTY

12 months standard. Extended warranty available.