



### **BUILT FOR HIGH PRODUCTION.**

Engineered and built to exceed the demands of commercial paving, the Weiler P395 incorporates proven designs with new innovations to provide performance, reliability and outstanding mat quality in a wide range of applications.



### **PROVEN SCREED.**

The Weiler designed 4,400 lb (1996 kg) screed delivers outstanding mat quality and a wide paving range. The 7' 8" (2.3 m) front mount screed is hydraulically extendable to 15' 4" (4.67 m).



### **LARGEST UNDERCARRIAGE.**

Best-in-class 96" (2438 mm) track length with 74" (1880 mm) of ground contact and 140 mm track chain pitch provides smooth ride and excellent flotation. Automatic track tensioning ensures performance and maximizes component life.



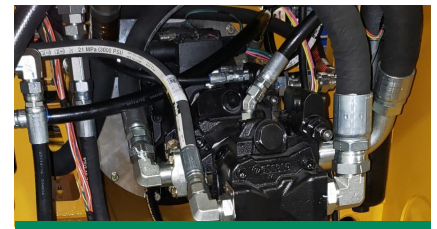
### **VISIBILITY AND CONTROL.**

The P395 has swing out consoles for optimal visibility while the adjustable, magnetic-resistance intelligent steering system allows for reliable control. The joystick allows for automatic functions.



### **DURABLE COMPONENTS.**

Highway class chains, conveyor and auger bearings provide long-term reliability. Remote grease lines located on the front of the counterweight provide easy daily maintenance.



### **FAST SERVICE.**

Remote grease lines, spray down system with 4-10' (1.2 - 3.0 m) coiled hoses. Hinged engine access doors and Caterpillar dealer service and support keep your machine up and running.

# P395 SPECIFICATIONS

<b>WEIGHT</b>	25,000 lb	11 340 kg	<b>SCREED WEIGHT</b>	4,400 lb	1996 kg	<b>ENGINE</b>	Cat® C3.6 Tier 4F/Stage V
<b>LENGTH</b>	15' 2"	4623 mm	<b>MAIN PLATE WIDTH</b>	16.5"	419 mm	<b>PAVING SPEED</b>	150 fpm 45 mpm
<b>WIDTH</b>	102"	2591 mm	<b>EXTENSION PLATE WIDTH</b>	10"	254 mm	<b>TRANSPORT SPEED</b>	350 fpm 106 mpm
<b>HEIGHT</b>	100"	2540 mm	<b>SCREED HEAT</b>	Electric - 4 elements		<b>FUEL CAPACITY</b>	32 gal 121 L
<b>TRUCK CLEARANCE</b>	19"	482 mm	<b>VIBRATION</b>	4 x 2500 vpm max		<b>HYDRAULIC CAPACITY</b>	30 gal 114 L
<b>AUGER DIAMETER</b>	14"	356 mm	<b>AUGER SPEED</b>	150 rpm max		<b>DEF CAPACITY</b>	5 gal 18 L

## POWERTRAIN

Cat® C3.6 Tier 4F/Stage V engine with 120 hp (89 kW)  
3-Speed hydrostatic drive, 350 fpm (106 mpm) transport speed  
Automatic track tensioning  
96" (2438 mm) track length with 74" (1880 mm) of ground contact  
14" (356 mm) bolt on, polyurethane track pads  
7 track rollers per side w/1 carrier roller  
140 mm track chain pitch  
Hydraulically driven 12 kW generator

## OPERATING ENVIRONMENT

Dual, swing-out operating stations  
Air ride seats  
Push button keypads  
Dual LCD display provides conditions and diagnostics  
Pause mode enables return to same settings  
Steering wheel standard  
Screed mounted control panels

## MATERIAL DELIVERY

11-ton (10 mt) hopper  
Replaceable floor plates  
Heavy-duty chains and flight bars  
Narrow chain guards  
14" (356 mm) Ni-hard augers  
Adjustable push roller  
Independent, fully proportional and reversing auger and conveyor  
Cut-off doors  
Hydraulic dumping front apron

## SALES AND SERVICE

Sold and serviced through Caterpillar dealers worldwide.

## SCREED

7' 8" (2.3 m) to 15' 4" (4.67 m) standard paving width  
4 element electric heated screed w/ thermostatic control  
3/8" (9.5 mm) thick screed plates  
Hydraulic slope  
Powered extension height  
Sonic feed sensors  
Hydraulic crown adjustment (+/-3%)  
Folding rear walkways  
Adjustable, springloaded end gates  
Heated end gates

## SERVICE/MAINTENANCE

8-gal (30 L) spray down system with 4 hoses/nozzles  
Braided electrical harnesses and sealed connections  
12-volt electric system with automotive-type fuses  
Remote grease fittings  
5 engine access doors  
Lockable vandal covers and engine access doors

## OPTIONAL EQUIPMENT

Truck hitch  
Hydraulically extendable push rollers  
DC LED blade lights  
Auto grade and slope controls  
Cut-off shoes  
12" (305 mm), 18" (457 mm), 24" (610 mm) berm attachment  
Hydraulic integrated berm

## WARRANTY

12 months standard. Extended warranty available.