

# E1650A

REMIXING TRANSFER VEHICLE



## NON-STOP, NON-CONTACT PAVING.

With 18 tons (16.3 mt) of onboard storage, triple pitch remix augers and 600 tph (544 mtph) discharge capacity, the E1650A keeps the paving train moving while reducing particulate and thermal segregation for smooth, long lasting roads.



## MATCH PAVING OUTPUT.

The variable speed elevator and conveyors allow the E1650A to match plant output while reducing wear. By setting chain speed to match production, the number of revolutions of the chain are reduced and larger packets of mix are carried with each slat, reducing material segregation.



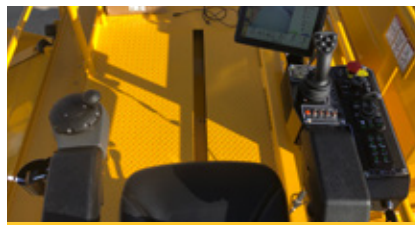
## NARROW TIRE WIDTH.

The 8' 6" (2.6 m) width from outside of tire to outside of tire of the E1650A provides room to work for the ground operator. The narrower width, along with 17' (5.2 m) inside turning radius, provides excellent maneuverability on narrow roads.



## MATERIAL MANAGEMENT.

The storage hopper management system features a sonic sensor that measures the material in the storage hopper. The paver hopper management system automatically controls the speed of discharge conveyor and storage elevator to maintain a consistent level of material while the distance to paver radar maintains distance between the E1650A and paver.



## COMPLETE CONTROL.

The 24" (610 mm) shifting operating platform with ergonomic controls is located at the front of the machine for exceptional visibility and comfort. The operator station shifts side-to-side and features a high-back, heated suspension seat that rotates 357°.



## DESIGNED AROUND CLEANOUT.

Full-width, hydraulic drop down floors along with four clam-shell doors for ground level access to the storage hopper and remix augers provide unmatched access for daily cleanout and weekly inspections. With the addition of the optional internal spray down system for chains and sprockets, the E1650A is designed to simplify the critical daily clean-out process.

# E1650A SPECIFICATIONS

<b>WEIGHT</b>	67,200 lb	30 481 kg	<b>HORSEPOWER</b>	250 hp	186 kW	<b>FUEL TANK CAPACITY</b>	110 gal	416 L
<b>STORAGE CAPACITY</b>	18 tons	16.3 mt	<b>TRANSPORT SPEED (MAX)</b>	9 mph	14.5 km/hr	<b>HYDRAULIC TANK CAPACITY</b>	80 gal	303 L
<b>TRANSPORT HEIGHT</b>	11' 5"	3480 mm	<b>WORKING SPEED</b>	202 fpm	61 mpm	<b>TURNING RADIUS</b>	17'	5.2 m
<b>TRANSPORT LENGTH</b>	54' 1"	16 485 mm	<b>CONVEYOR CAPACITY</b>	600 tph	544 mtph	<b>TIRES</b>	High Flotation 18"-25" 28 ply	
<b>TRANSPORT WIDTH</b>	9' 10"	2997 mm	<b>CONVEYOR SLAT WIDTH</b>	36"	914 mm	<b>GROUND DRIVE</b>	4 Wheel Hydrostatic w/ 3 Speeds	
<b>WORKING HEIGHT</b>	15'	4572 mm	<b>ELEVATOR CAPACITY</b>	1,000 tph	907 mtph			
<b>ENGINE</b>	Cat® C7.1 Tier 4F/Stage V		<b>ELEVATOR SLAT WIDTH</b>	56"	1,422 mm			

## POWERTRAIN

Cat® C7.1 Tier 4F/Stage V Engine with 250 hp (186 kW)  
4-wheel drive  
Shift-on-the-fly 3-speed hydrostatic drive  
202 fpm (61 mpm) working speed  
9 mph (14.5 km/hr) transport speed  
4-wheel steering standard w/ 17' (5.2 m) turning radius  
Rear steer with crab and coordinating steering and auto center

## OPERATING ENVIRONMENT

24" (610 mm) sliding operator platform located at front of machine  
High-back, heated suspension seat w/ 357° rotation  
Dual side dump hopper control stations  
Rear control station for cleanout and hopper insert placement  
10" (254 mm) color, touch-screen display  
Optional fume extraction system  
Lighted machine egress  
Optional storage hopper management system  
Optional paver hopper insert management system  
Optional distance to paver control  
Optional conveyor auto centering  
Optional camera system w/ 4 cameras and color display

## MATERIAL DELIVERY

18 tons (16.3 mt) storage hopper capacity  
1,000 tph (907 mtph) elevator capacity  
600 tph (544 mtph) storage and discharge conveyor capacity  
Variable speed elevator and conveyors  
Dump-Assist hydraulic moving floor  
Auto dump hopper cycle  
Heavy-duty, cast dump hopper augers  
Triple-pitch, cast remix augers  
High torque, direct-drive motors  
55° max conveyor swing in either direction  
Windrow head attachment option

## SALES AND SERVICE

Sold and serviced exclusively through Caterpillar dealers worldwide.

[WWW.WEILERPRODUCTS.COM](http://WWW.WEILERPRODUCTS.COM)

## CLEANOUT

Full-width, hydraulic cleanout doors on elevator/conveyors  
Full-width dump hopper cleanout door  
Four clam shell doors for storage hopper access  
Optional internal spray down system

## SERVICE/MAINTENANCE

Hydraulic conveyor chain tensioner option  
Chromium carbide wear plate below conveyor foot shaft  
Separated foot shaft bearings  
Large engine access doors  
Ground level fueling  
Braided electrical harnesses and sealed connections  
Color-coded electrical wires  
Optional auto greaser system

## OPTIONAL EQUIPMENT

Truck hitch  
Windrow head  
Conveyor auto chain tensioner  
AR400 1/4" (6.35 mm) storage hopper liner  
Canopy  
Chromium carbide floor plates  
Separate 60 gal (227 L) tank for tire spray system  
Chain and sprocket internal spray down system  
Tire spray system  
LED work lights (2 head, 6 work, 2 ground and 4 corner strobes)  
LED blade lights  
Truck signal lights  
12kW generator  
Fume extraction  
Storage hopper level indicator  
Paver hopper management with distance to paver  
Auto center conveyor system  
Camera system w/color display  
Automatic greaser  
13 (11.8 mt) or 17 ton (15.4 mt) bolt insulated hopper insert

## WARRANTY

12 months standard. Extended warranty available.