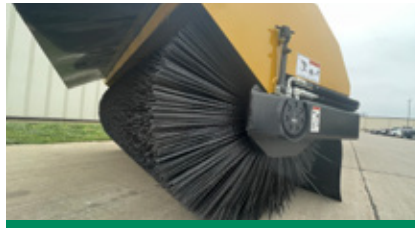


B400 FRONT MOUNT BROOM



INNOVATIVE DESIGN.

The B400 is the most innovative self-propelled broom on the market with features designed with years of industry experience. Built to withstand the demands of road construction, milling operations and all construction site needs.



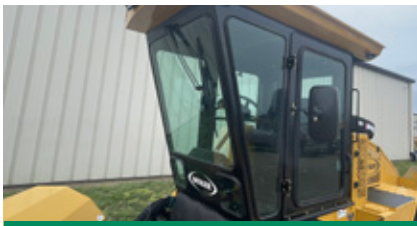
QUICK CHANGE BRUSH HEAD.

The 77.5" (1969 mm) floating brush head features variable down pressure and a hydraulic quick change arm allowing for broom changes in less than 2 minutes. Optional 24" (610 mm) side shift and angling brush head available.



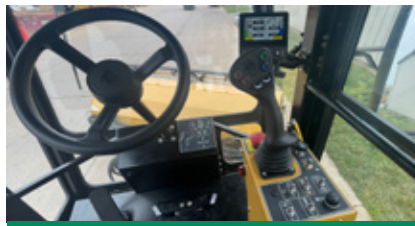
POWER TO PERFORM.

The B400 features the Cat® C2.8 Tier 4 Final/Stage V engine with 74 hp (55 kW) powers the 2-speed wheel motors with high speed transport mode and low speed sweeping mode.



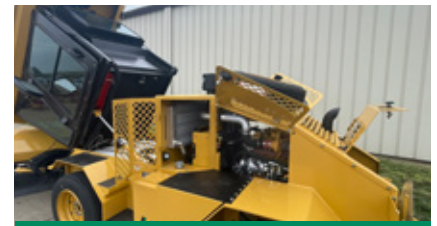
EXCELLENT VISIBILITY.

The fully enclosed cab provides excellent operator visibility and features 2 cab doors with tinted sliding windows. The cab is pressurized with a high efficiency filter system.



EASY TO OPERATE.

The B400 features intuitive controls with a multi-function joystick, full color display and foot pedal or joystick propel option. Optional Bluetooth® radio with 2 speakers available.



UNMATCHED ACCESSIBILITY.

The hydraulic tilting cab provides access to the optional 100 gal (379 L) water tanks. Multiple doors provide access to the engine and hydraulic components. Caterpillar dealer service and support to keep your machine up and running.



B400 SPECIFICATIONS

| | | |
|----------------------------|-----------|---------|
| OPERATING WEIGHT | 10,200 lb | 4626 kg |
| HEIGHT | 105" | 2.67 m |
| LENGTH | 204" | 5.18 m |
| LENGTH W/SIDE SHIFT | 213" | 5.41 m |
| WHEELBASE | 78" | 1.98 m |

| | | |
|------------------------------|---------|---------|
| BRUSH LENGTH | 77.5" | 1969 mm |
| BRUSH FRAME WIDTH | 86" | 2184 mm |
| OPT. BRUSH LENGTH | 89.5" | 2273 mm |
| OPT. BRUSH SIDE SHIFT | 24" | 610 mm |
| OPT. WATER SYSTEM | 100 gal | 379 L |

| | | |
|----------------------------|---------------------------|----------|
| ENGINE | Cat® C2.8 Tier 4F/Stage V | |
| HORSEPOWER | 74 hp | 55 kW |
| MAX TRANSPORT SPEED | 18 mph | 29 km/hr |
| MAX WORK SPEED | 9 mph | 14 km/hr |
| FUEL CAPACITY | 35 gal | 132 L |

PERFORMANCE

- Self-propelled front mount broom
- Cat® C2.8 Tier 4 Final/Stage V engine provides 74 hp (55 kw)
- 2-speed wheel motors with high transport and work modes
- 18 mph (29 km/hr) travel speed for quick transport
- 9 mph (14 km/hr) low speed sweeping mode
- 17.5" (445 mm) heavy duty rims
- 35 gal (132 L) fuel tank

BRUSH ASSEMBLY

- 77.5" (1969 mm) brush length
- Floating brush head with variable down pressure
- Hydraulic quick change brush core
- Front dirt deflector
- Rear dirt deflector
- Optional 24" (610 mm) side shifting and angling brush head

OPERATING ENVIRONMENT

- Fully enclosed cab with air conditioning
- Pressurized cab with high efficiency filter
- 2 cab doors
- Tinted sliding windows
- Intuitive controls with multi-function joystick
- Full color display with machine conditions and diagnostics
- Foot pedal or joystick propel option
- Operator alarms for faults and codes

SERVICE/MAINTENANCE

- Hydraulic tilting cab with access to water tanks
- Multiple doors provide access to engine and hydraulic components
- Sealed, braided harnesses protect wires
- Color-coded and numbered wiring

OPTIONAL EQUIPMENT

- LED beacon light
- Bluetooth radio w/ 2 speakers
- Upgraded 89.5" (2273 mm) brush length
- 77.5" (1969 mm) brush poly and wire combo
- 89.5" (2273 mm) brush poly and wire combo
- Four corner mounted cab LED lights
- Backup camera
- Belly mount 100 gal (379 L) water system
- 24" (610 mm) side shifting and angling brush head
- Spare tire w/ rim

SALES AND SERVICE

Sold and serviced through Caterpillar dealers worldwide.

WEILERPRODUCTS.COM

WARRANTY

12 months standard. Extended warranty available.

