

**POWERTRAIN**

Cat C2.2 Tier 4i Engine, 49 hp
Cat C2.2 Tier 4i Engine, 60 hp option
Front wheel hydrostatic drive
2-speed motor
2-speed gearbox
150 fpm max working speed
8 mph transport speed
Differential lock on front axle
2-wheel steering standard
11' turning radius
Fail safe parking brake
3255/70 22.5 ply tires

OPERATING ENVIRONMENT

Access to all machine controls from console
Belt on and off controlled with foot pedal
Seat position allows for optimal visibility
Wrap around safety rails and kick plates

MATERIAL DELIVERY

3-cubic yard hopper capacity
9' 4" dump hopper opening
Fold-able front hopper for 8'5" transport width
9' long, 18" wide chain-driven conveyor
Double flashing belt protection
Right side material discharge
400 fpm belt speed
Adjustable push roller

TOOLING

1' to 6' widening width
8" above and 10" below grade
21" tall strike-off tools
1', 2' and 3' standard tool
2'-3' adjustable tool option
Accommodates large spoil pile and surge capacity

SERVICE

Multiple engine access doors
Easily accessible battery compartment
All valves and cylinders easily accessible
Doors equipped with anti-theft locks
Braided electrical harnesses and sealed connections
Color-coded electrical wires

**OPTIONAL EQUIPMENT**

Truck Hitch Group
Hydraulic Extendable Push Roller
Vandal Covers
LED Strobe Light Group
Spray Down System Group
Work Lights
LED Work Lights
1', 2', 3' Strike-Off Tool
2' - 3' Telescoping Strike-Off Tool
Extending End Gate w/ Chains

WARRANTY

12 months

SALES AND SERVICE

Sold and serviced exclusively through Cat dealers worldwide

SPECS

Weight: 14,500 lbs
Length: 16'
Operating Width: 10'
Transport Width: 8' 5"
Height: 8'
Wheelbase: 96"
Hopper Capacity: 3 cu yds
Conveyor Length: 9'
Conveyor Width: 18"
Belt Speed: 400 FPM
Transport Speed: 8 mph
Working Speed: 150 fpm max
Turning Radius: 11'
Fuel Tank Capacity: 30 gal
Hydraulic Tank Capacity: 20 gal



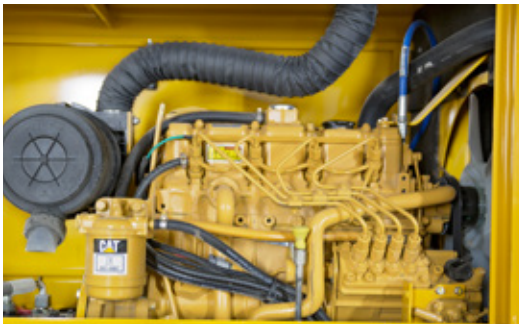
PRODUCTIVE MATERIAL DELIVERY

- 3 cu yds hopper means fewer truck exchanges during the workday
- Fold-able front hopper for 8' 5" transport width
- 18" wide, 400 fpm conveyor belt speed allows for quick placement of materials
- Conveyor speed easily controlled with an easy to reach lever
- Right side material discharge
- Double flashing provides additional belt protection



PRECISE STRIKE OFF

- Widens roads from 1' up to 6'
- Place material up to 8" above or 10" below grade
- 21" tall strike-off tools
- 1', 2', 3' and 2'-3' adjustable tool options
- Tooling mounted behind front tire accommodates large spoil pile and surge capacity



RELIABLE POWERTRAIN

- Cat C2.2 with 49 hp or Cat C2.2T 60 hp option
- Front wheel hydrostatic drive with 2-speed motor and 2-speed gearbox delivers 150 fpm working speed and 8 mph transport speed
- Differential lock on front axle provides added traction in less than desired conditions
- Compact design with 11' turning radius



EXCEPTIONAL VISIBILITY AND CONTROL

- Belt on and off controlled with foot pedal
- Platform controls located at the fingertips include visual reference to reduce training time and increase comprehension
- Operator located back from front dump hopper and toward the outer edge of machine for increased visibility
- Spring-applied brakes stop machine in event of engine, hydraulic or driveline failure



SERVICE AND SUPPORT

- Cat Dealer sales, service and support
- Electronic controller provides diagnostic capability
- Self-cleaning pulleys minimize material build-up
- Built-in strike-off and tooling storage locations
- Multiple doors enable easy access to engine and machine components
- Weiler trained dealer service technicians
- A comprehensive standard warranty ensures satisfaction